

Repair Management

An introduction to
Avtrade's Repair
Management
services



AVTRADE

How do you manage without us?

Component repair can be a stressful business.

Dealing with workshops, tackling tough timescales, negotiating deals and delivering the goods on time - with so many balls in the air, you can easily keep your fleet on the ground.

Let Avtrade take the stress out of Repair Management.

With Avtrade overseeing every aspect of the RM cycle, we can ensure the best quality work, offer the most competitive and flexible finance options and delivery on time - every time.



The complete nose-to-tail Repair Management solution

Avtrade can offer fixed turnaround times, and provide you with regular status updates so you can easily keep track of your orders.

Our average processing time is 22 business days. If we encounter unforeseen delays we can offer replacements from our vast inventory pool.

We have access to 500 managed and approved vendors and OEMs worldwide, with an additional 250 used on an ad-hoc basis.

You'll also benefit from the preferential warranty terms that we enjoy with many workshops, along with box warranty on parts from Avtrade's pool.

Dedicated team

We'll assign you a dedicated Account Manager for the whole RM process. Our expert representatives will monitor vendors and OEM's constantly, ensuring detailed knowledge of customer order books, and guaranteeing first class service, maximum efficiency and on-time delivery.



Quality and consistency

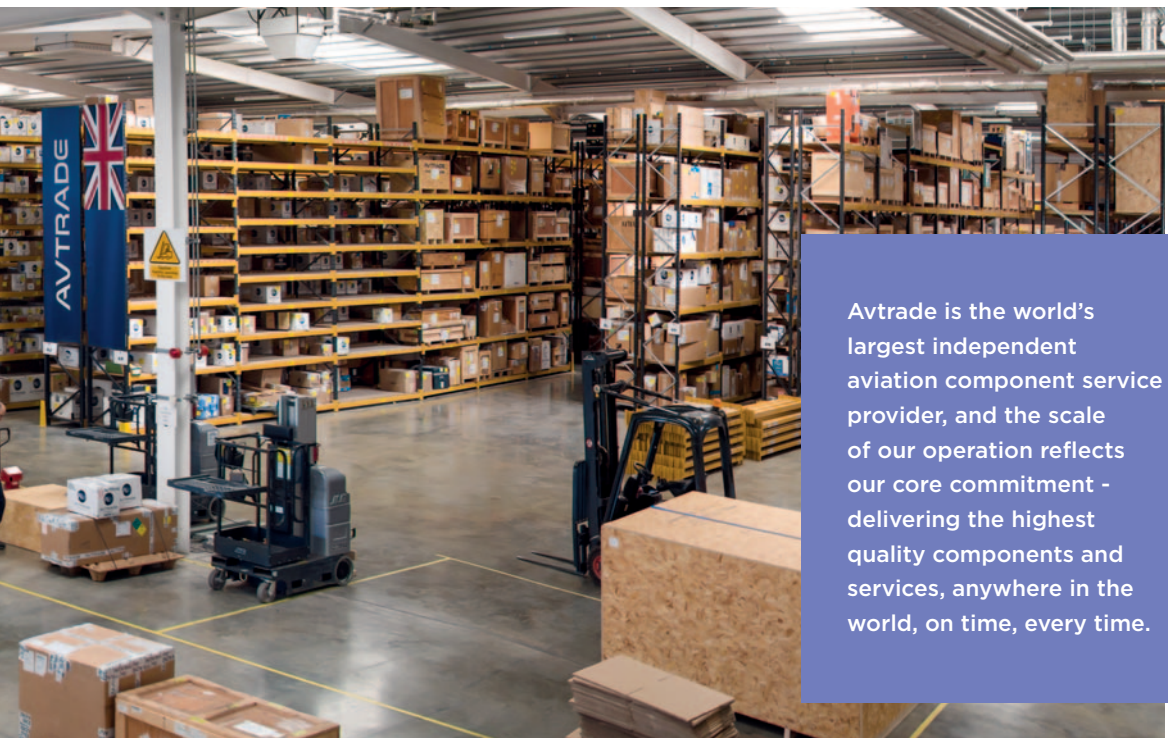
You can monitor the whole Repair Management process on Avnet, our bespoke ordering system, which will give updates on order progress, shipping details and workshop findings. Our dedicated Vendor Team employ a strict rating system with all vendors to guarantee consistently high levels of quality and performance.

Flexible finance

Avtrade will take away the burden of finance management, whether on a contract or ad-hoc basis. We offer variable fees based on your individual needs, with significant discounts on later review. Our dedicated RM team assess finance options constantly to ensure that we always provide the most competitive prices.



**CONTACT OUR
DEDICATED REPAIR
MANAGEMENT
TEAM NOW.**



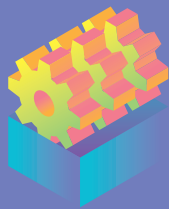
Avtrade is the world's largest independent aviation component service provider, and the scale of our operation reflects our core commitment - delivering the highest quality components and services, anywhere in the world, on time, every time.

Repair beyond compare.

When you use Avtrade for Repair Management, you'll also benefit from unrivalled customer service from a dedicated global team, and unlimited access to the world's largest available component inventory. From beginning to end, from nose to tail, from East to West - we deliver.



24 HR
REPAIR ORDER
PROCESSING TIME



27,000
SHOP VISITS
PER YEAR



750
MANAGED
VENDORS



22 DAYS
SHOP PROCESSING
TIME



**DEDICATED
ACCOUNT
MANAGER**



**VARIABLE
MANAGEMENT
FEES**



**EXTENDED
WARRANTIES
AVAILABLE**



**ONLINE
ACCESS TO
AVNET**

Avtrade.com

TELEPHONE +44 (0) 1273 833330

EMAIL contact@avtrade.com

Avtrade Global Headquarters • Sayers Common • West Sussex • BN6 9JQ • UK



AVTRADE

THE GLOBAL COMPONENT
SERVICE PROVIDER